



RMP 250



RMP 600



RMP 600HP



RMP 600S



RMP 1000HP

Flatteners

For the flattening of various products to equal thicknesses

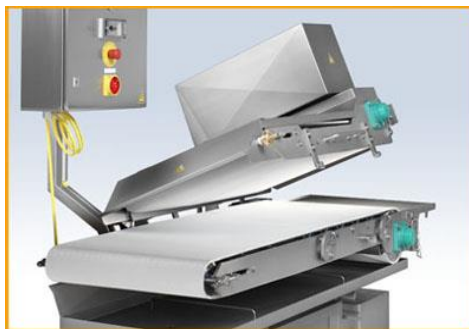
The RMP flatteners are manufactured in stainless steel with food approved conveyor belts, which are available in different belt profiles. Both the upper and lower conveyor have their own drive. The free space between the conveyors can be easily and accurately adjusted to the required product thickness.

For safety reasons the machines are executed with covers and safety switches.

The machines are mobile with either fixed or swivel, lockable wheels.

There are different standard models available, with belt widths of 250, 400, 600 and 1000 mm.

As an option we can provide variable belt speed, outfeed conveyor, water spray and catch tray. (other modifications on request)



Effective and easy cleaning

The tipping system makes both conveyor belts easily accessible for adjustment and cleaning.

The special frame construction and quick release systems ensure that the conveyor belts can be fully removed both easily and quickly.

Both motors are guarded by covers, except S model which has stainless steel motor drives IP 67.

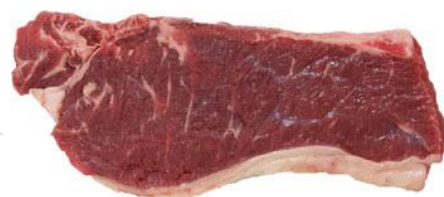
The control box is protected to IP 66 and has been suitable mounted at a high level on the machine. The construction allows cleaning with high pressure water.

Products

The products are visually more attractive as a result of the surface increase and the uniform shape.

The equal thickness leads to equal and shorter cooking times which results in lower weight losses. Flattening also increases the tenderness of the meat.

Suitable for fresh as well as tempered products.



Model	: RMP 250	RMP 400	RMP 600	RMP 600S	RMP 600HP	RMP 1000HP
Belt width mm	: 250	400	600	600	600	1000
Voltage V	: 400	400	400	400	400	400
Power kW	: 2 x 0,6	2 x 0,6	2 x 0,6	2 x 0,55	2 x 1,5	2 x 1,5
Weight kg	: 250	330	420	450	660	840

Technical changes reserved

ZENFOMA B.V.
WWW.ZENFOMA.COM

SCHOOTLAAN 31,
INFO@ZENFOMA.COM

NL-6002EA WEERT THE NETHERLANDS
TEL. ++31 (0) 495 562079